

PART OF THE S. 1/2, OF SECTION 7, T.6N., R.2E., S.L.B. & M.

173

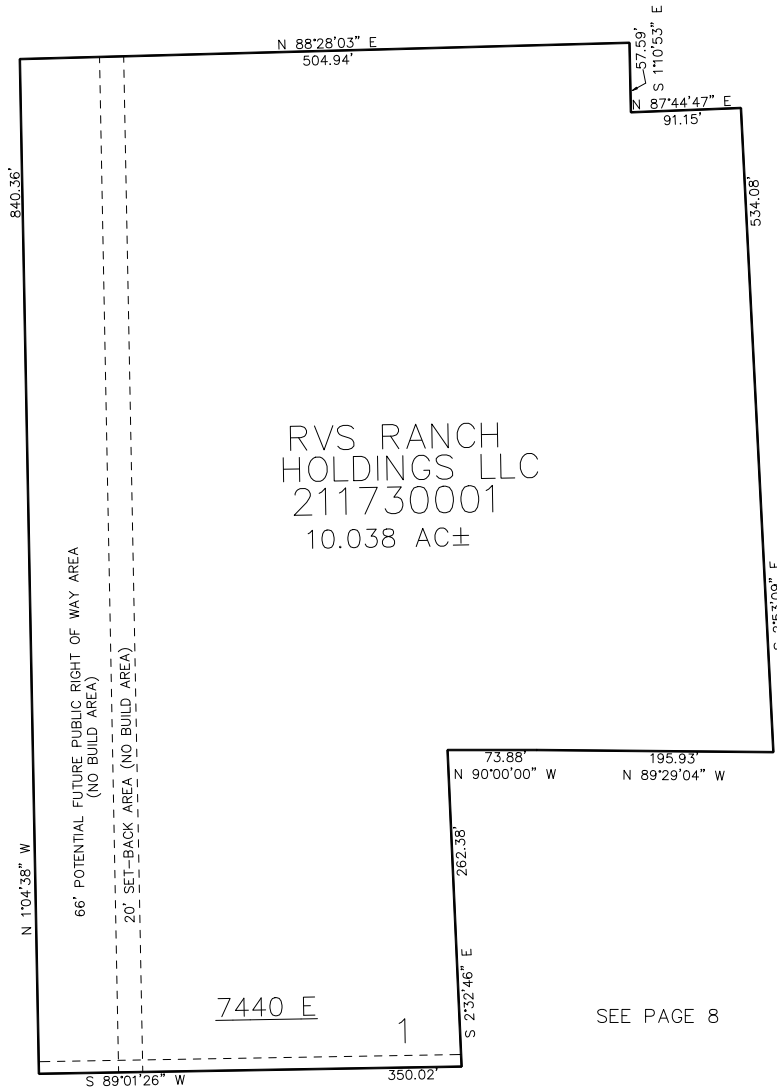
# SMITH ESTATES

IN WEBER COUNTY

TAXING UNIT: 520

SCALE 1" = 80'

SEE PAGE 8



SEE PAGE 8

SEE PAGE 8

SEE PAGE 8

10' UTILITY & DRAINAGE EASEMENTS EACH  
SIDE OF PROPERTY LINES AS INDICATED  
BY DASHED LINES EXCEPT AS OTHERWISE  
SHOWN.

FOR COMPLETE SURVEY DATA SEE  
ORIGINAL DEDICATION PLAT IN  
BOOK 94, PAGE 11 OF RECORDS.

500 NORTH STREET